

SAFETYPRO FIX-C (20-80)

April 2022



DESCRIPTION

Permanently fixed fall protection system for concrete constructions, ensures the safety of people working at heights.

APPLICATION

The SafetyPro fix fall protection system for concrete flat roofs up to 10° incline. Can be installed as a single anchor device or as a horizontal lifeline system.

PERFORMANCE

Forces according to EN 795:2012

Static	12+2 kN
Dynamic	9+1 kN
only with PPE EN363	6 kN (max)

BENEFITS

- ✓ Only two fixing screws for each anchor device
- ✓ Oval fixing holes for fine adjustment during installation
- ✓ Suitable fixing elements as separate components available
- ✓ Different anchor heights up to 80 cm for various thermal insulation thickness
- ✓ System components made of high quality corrosion resistant stainless steel
- ✓ Excellent thermal insulation performance, integrated thermo stop baseplate and mineral wool filling to reduce thermal bridge effect
- ✓ Installed as a horizontal lifeline system continuous free movement along the roof edge
- ✓ Installed as a single anchor device can be used with temporary horizontal lifeline cable
- ✓ Tested in accordance with European standards EN 795:2012 and CEN/TS 16415:2013

SPECIFICATIONS

Property	Unit	Value
Standard height	cm	50
Base plate size	cm	7,5 × 15
Post diameter	cm	4,8
Material	–	stainless steel
Maximum number of users	person	1+1
Maximum roof angle	°	10
Weight	kg/post	2,25
Recommended distance to roof edge	m	2,5

All dimensions are nominal



System documentation

The SafetyPro system documentation is the normative when installing the system.



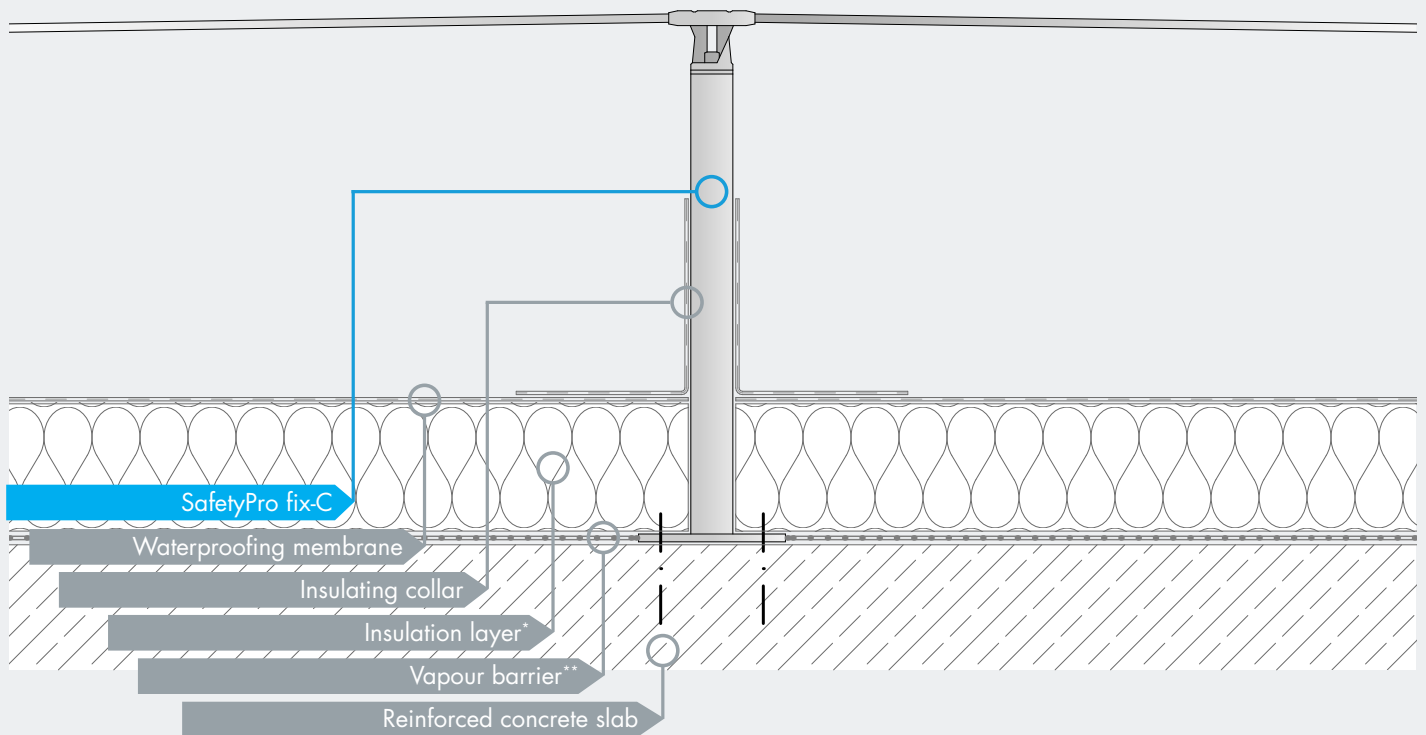
www.knaufinsulation-safetypro.com

challenge.
create.
care.

SAFETYPRO FIX-C (20-80)

April 2022

BUILD-UP

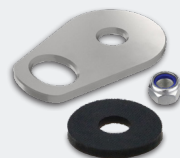


*Knauf Insulation rock mineral wool products
**Knauf Insulation LDS foil

COMPONENTS



SAFETYPRO FIX-C



SAFETYPRO ANCHOR POINT HEAD AND CONNECTOR SET



SAFETYPRO WIRE ANCHOR HEAD SET



SAFETYPRO FIX ACCESSORIES

Knauf Insulation, d.o.o.

Trata 32, 4220 Škofja Loka, Slovenia Tel: +386 (0)4 5114 000 E-mail: urbanscape@knaufinsulation.com

For more info visit: www.urbanscape-architecture.com

All rights reserved, including those of photomechanical reproduction and storage in electronic media. Extreme caution was observed when putting together and processing the information, texts and illustrations in this document. Nevertheless, errors cannot quite be ruled out. The publisher and editors cannot assume legal responsibility or any liability whatever for incorrect information and the consequences thereof. The publisher and editors will be grateful for improvement suggestions and details of possible errors pointed out.

CODEXXXX

challenge.
create.
care.